

# SHADES OF WHITE





Baumit white tones

# Shades of White

- **12 unique white tones**
- **For the perfect white façade**
- **Simplicity and style united**

Colour trends come and go but classic white will always remain a popular choice – especially on the façade!  
In combination with black it's often the only thing you need to create perfect harmony.





### **The effect of white.**

*White is the sum of all colours of light and in its purest form, is also their absence. White looks clean and clear, but also cool and businesslike.*

*The effect of white façades is as stunning as that of any colour. Choosing the right white tone for your façade is often anything but an easy decision.*

*No wonder, because the wall colour white is rarely just white. Pure White? Off-White? Warm white? Cold white? Even small variations can make huge differences in the appearance of the building. Warm white colours have undertones of red, orange and yellow, resulting in a soft glow and welcoming vibe.*

*Cooler whites have hints of green, blue and violet, contributing to a clean and fresh look.*

### **12 Shades of White**

*To limit the almost boundless possibilities, Baumit took the 12 most beautiful white tones and combined them to produce a unique colour collection – The Baumit “12 Shades of White” palette. From Star to Ivory, from Opal to Ice. Feel free to choose from the selected tones to give your project a timeless appearance – as always in the well-known Baumit high quality. With the moodboards on the following pages you will get to experience a first impression of the exceptional 12 Shades of White by Baumit.*

### **Cool down**

*As well as the clean and timeless appearance of white façades they also have a functional side as well. They reflect a large amount of solar radiation, which helps reduce the heat buildup in cities during the hot summer months.*

# StarWhite

W 1200



*Exposed Concrete*



*Geometric Porcelain*



*Cool Metal*





StarWhite — W 1200



### ***Nobel Tower***

Architect: Iron Tower Investment, Piotr Z. Barełkowski

Location: Poznań, Poland



# MineralWhite

W 1201



*Modern Steel*



*Stone Tessellation*



*Crystallised Quartz*







### ***A house among the trees***

Architects: Šebo Lichý, Tomáš Šebo, Igor Lichý, in cooperation with Katarína Uhnáková, Štefan Onofrej, Martina Matušová. Location: Bratislava, Slovakia

# CottonWhite

W 1202



*Light Oak*



*Travertine Bricks*



*Burlap Fabric*







CottonWhite — W 1202



## Maar Family House

Architect: Pokorný architekti s.r.o.

Location: Záhorská Bystrica, Slovakia



# ChampagneWhite

W 1203



*Beech Coating*



*Marbling Pattern*



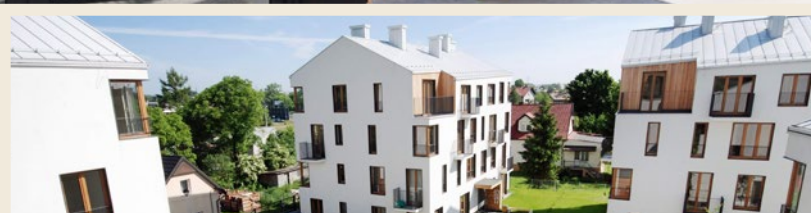
*River Gravel*







ChampagneWhite — W 1203



## Osiedle Nad Stawem

Architect: Biuro Architektury Stosowanej

Location: Krakow, Poland





# LaceWhite

W 1204



*Floral Chantilly*



*Sand Stone*



*Vale Haze*



LaceWhite – W 1204



**Collective housing and Health Centre**

Architect: Ute Bonelli I Gil & Peris + Toral

Location: Barcelona, Spain

# IvoryWhite

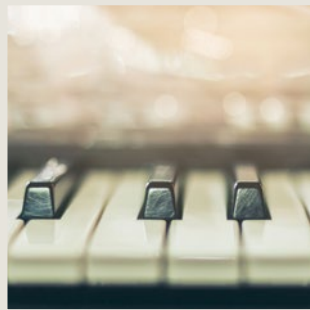
W 1205



*Breezing Wheatfield*



*Soft Linen*

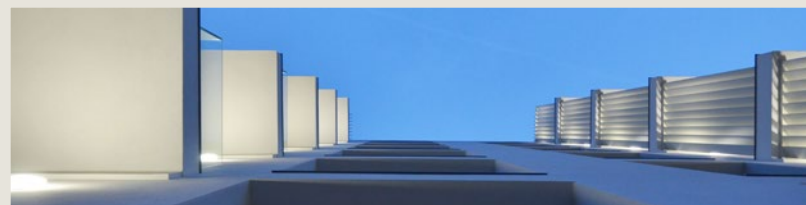


*Ebony & Ivory*





IvoryWhite – W 1205



### **Cismigiu House**

Architect: TAG Architecture – Monica Sache

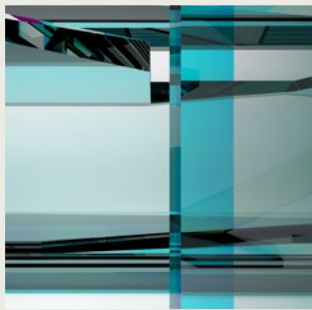
Location: Bucharest, Romania. Picture copyrights: Borgat

# OpalWhite

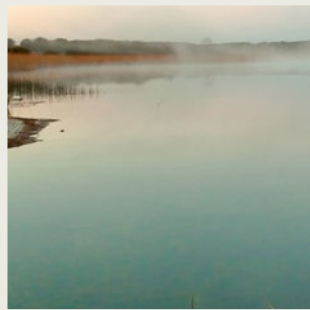
W 1206



*Iridescent Bicones*



*Twofold Glazing*



*Morning Dew*







OpalWhite – W 1206



## Casa Galgo

Architects: Clara Matilde Moneo Feduchi & Valerio Oriol Canals Revilla

Location: Madrid, Spain





# AntiqueWhite

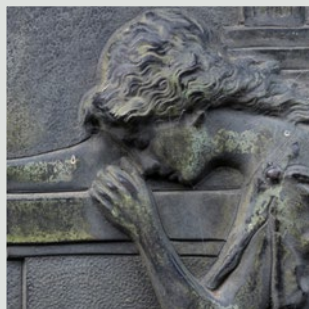
W 1207



Scandinavian Chic



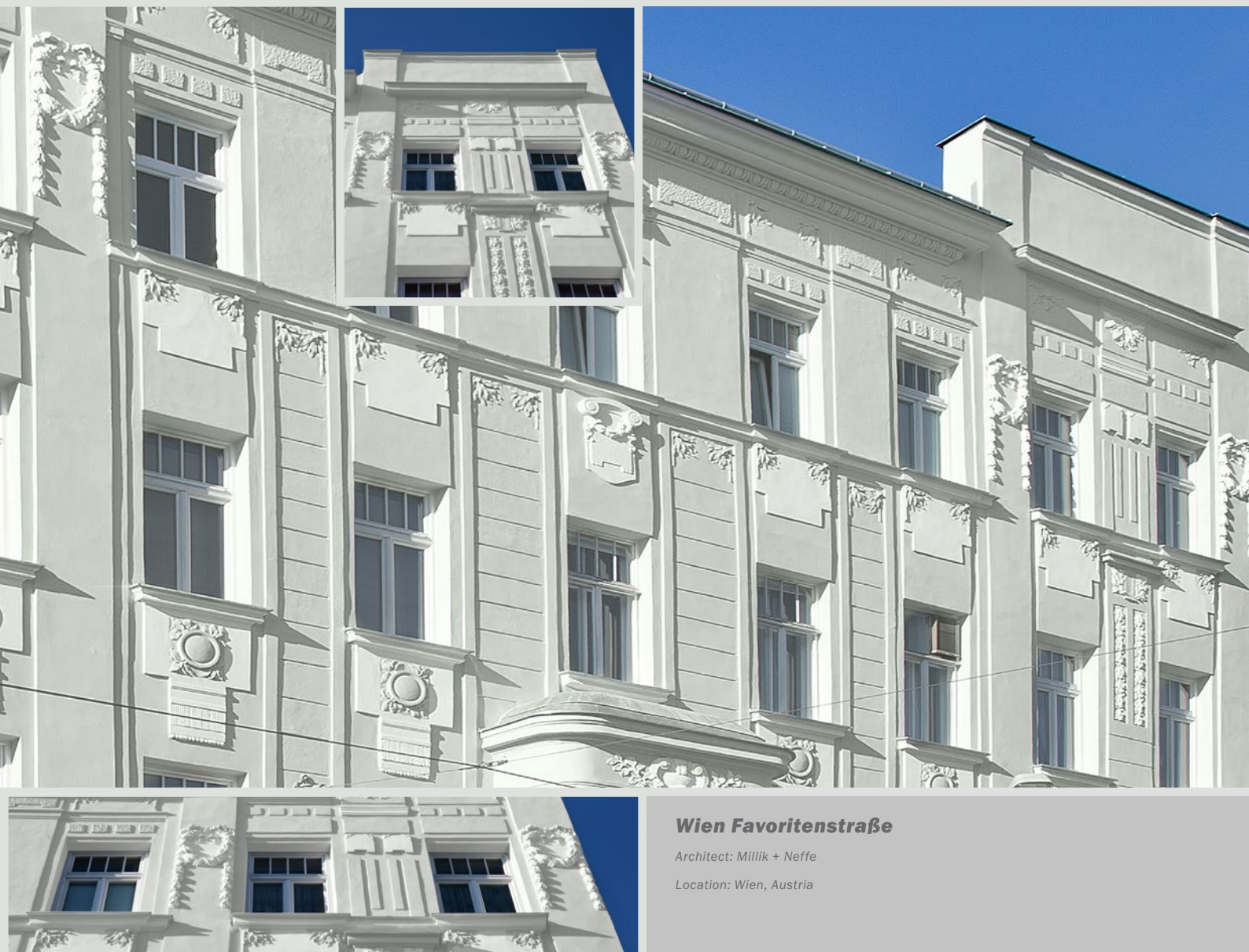
Vintage Wood



Archaic Sculpture



AntiqueWhite – W 1207



### **Wien Favoritenstraße**

Architect: Millik + Neffe

Location: Wien, Austria





# CeramicWhite

W 1208



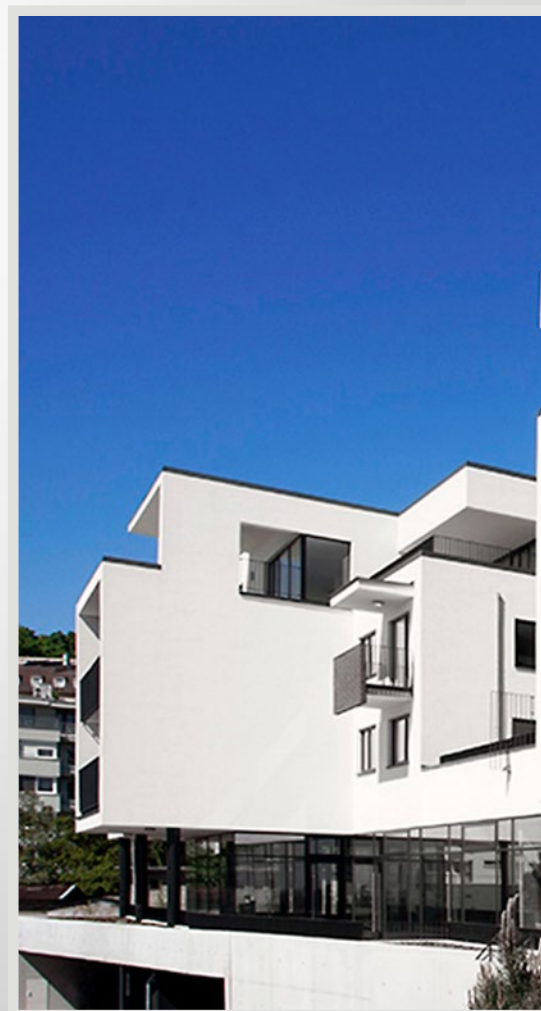
*Industrial Design*



*Black Slate*



*Rustic Stoneware*





CeramicWhite – W 1208



### ***Panorama Koliba***

Architects: Peter Moravčík, in cooperation with Tomáš Čechvala and Andrea Černá

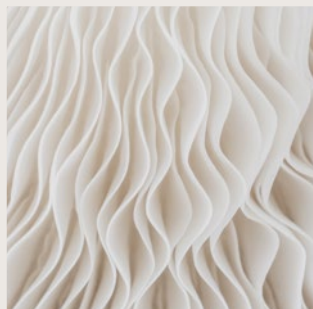
Location: Bratislava, Slovakia





# MagnoliaWhite

W 1209



*Flowing Corals*



*Glazed Marble*



*True Softness*





MagnoliaWhite – W 1209



### **Wing House**

Architect: Bogdan Neagu - NBC Arhitect Bucharest

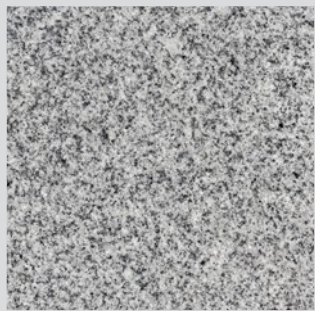
Location: Corbeanca, Ilfov County, Romania



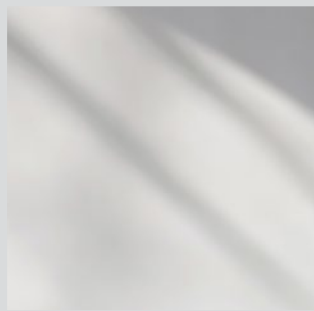


# ShadowWhite

W 1210



*Durable Granite*



*Incidence of Light*



*Traditional Stucco*



ShadowWhite – W 1210



**Wien Taubstummengasse**

Architect: Architekt Weinmann and Partner Ziviltechnikergesellschaft mbH

Location: Wien, Austria





# IceWhite

W 1211



*Polished Titan*



*White Brick*



*Luminous Winter*



IceWhite – W 1211



### ***Herdade Da Aroeira***

Architects: Espaço Arquitectos- Projectos de Arquitectura, Isidro Afonso Ampaio da Silva, Patricia da Cruz Pragana. Location: Lisbon, Portugal





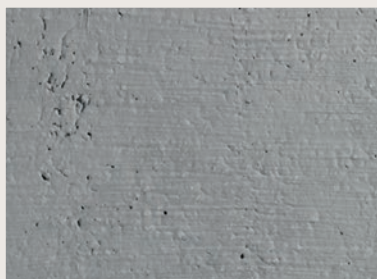
# White Never Goes Out of Style

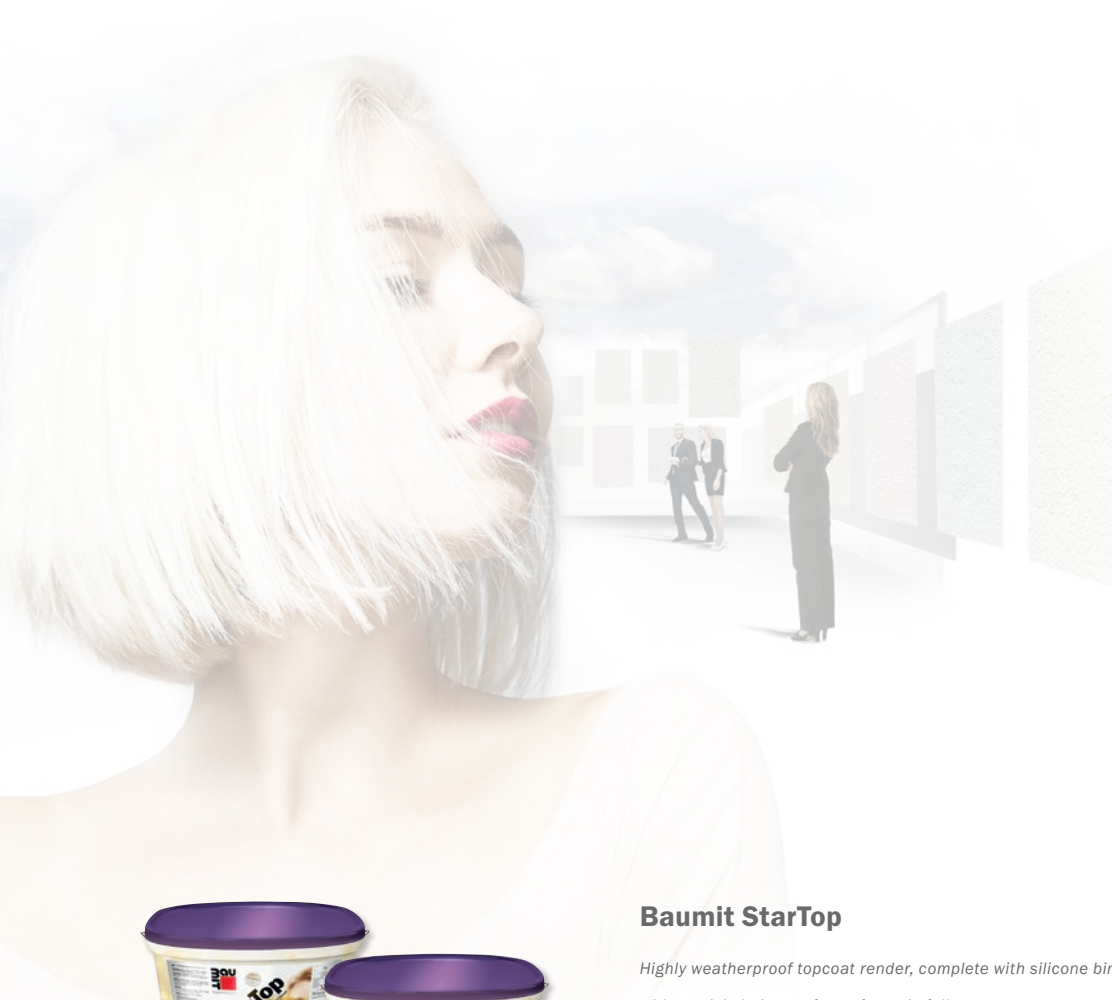


## Baumit CreativTop

Take an already great product and make it even better! That's what we did with our well proven Baumit CreativTop. The new recipe makes it easier to use, but it is also equipped with the unique Baumit Drypor Effect. Once cured, this effect creates a quick drying surface after rain fall significantly reducing the risk of algae and mould infestation.

- For a fast drying (post application) wall surface (Drypor)
- Unlimited design possibilities
- Improved processing properties





## Baumit StarTop

*Highly weatherproof topcoat render, complete with silicone binder. Once cured provides the building with a quick drying surface after rain fall.*

- For a fast drying wall surface
- Increased protection against algae and mould
- Easy application



## Baumit SilikonTop

*Ready-to-use, silicone resin render for external use. A highly durable render, suitable for almost all requirements. Water vapour permeable, extremely water repellent, dirt-resistant and versatile.*

- Premium protection
- Water and dirt repellent
- High coverage









